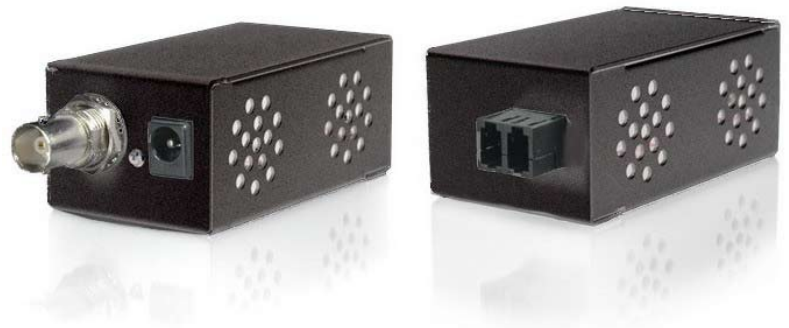


HDSDI10KM KIT distributes broadcast quality video via fiber optical cable at distances up to 10km. An end to end solution, HDSDI10KM KIT includes the transmitter as well as the receiver to transfer HD/SDI output across long distances.



Features of the HDSDI10KM KIT :

- Robust Error Free Transmissions for Distances up to 10 km (6.25 miles) over Single Mode Fiber
- HD/SDI Signal Detection LED
- Hot-Pluggable and Hot-Swappable Optical Module
- Automatic Cable Equalizer
- Multi-Rate Re-Clocker
- 5 year warranty

Specifications:

- Input
 - Transmitter: 1x 75Ω BNC
 - Receiver: 1x Optical LC
- Output
 - Transmitter: 1x Optical LC
 - Receiver: 1x 75Ω BNC
- Supports Pathological Patterns for SMPTE-292M, SMPTE-259M, DVB-ASI
- Optical:
 - Wavelength: 1310 nm
 - Type: Single-mode
 - Optical power: > -9 dBm
 - Rise/Fall: < 500 pS
 - Extinction Ratio: 8-10
 - Overshoot < 10%
 - Jitter < 0.2 UI
- Data Rates: 1485 / 1483 / 270 Mbps
- Cable Equalization: Up to 300m/1000ft (Belden 1694A) for 270 Mbps; up to 150m/500ft (Belden 1694A) for 1.485 Gbps
- Power – 5V 4A DC
- Size – Enclosure 4.1"L x 3.2"W x 1"H

HDSDI10KM KIT
Part # PVC-976
UPC: 8-72307-97600-1
Box Dimensions: 8"W x 5"H x 2"D
Shipping Weight: 2 lbs.
MSRP: \$1499.99

Includes:

- HDSDI10KM Tx Transmitter
- HDSDI10KM Rx Receiver
- Two 5VDC Power Adapters
- Velcro Strips for easy mounting
- User Manual